

THE PINE II

3,072
TOTAL HEATED SQ FT

3,756
TOTAL HOME



MAIN LEVEL

1,393 Heated Sq Ft

SECOND LEVEL

1,679 Heated Sq Ft

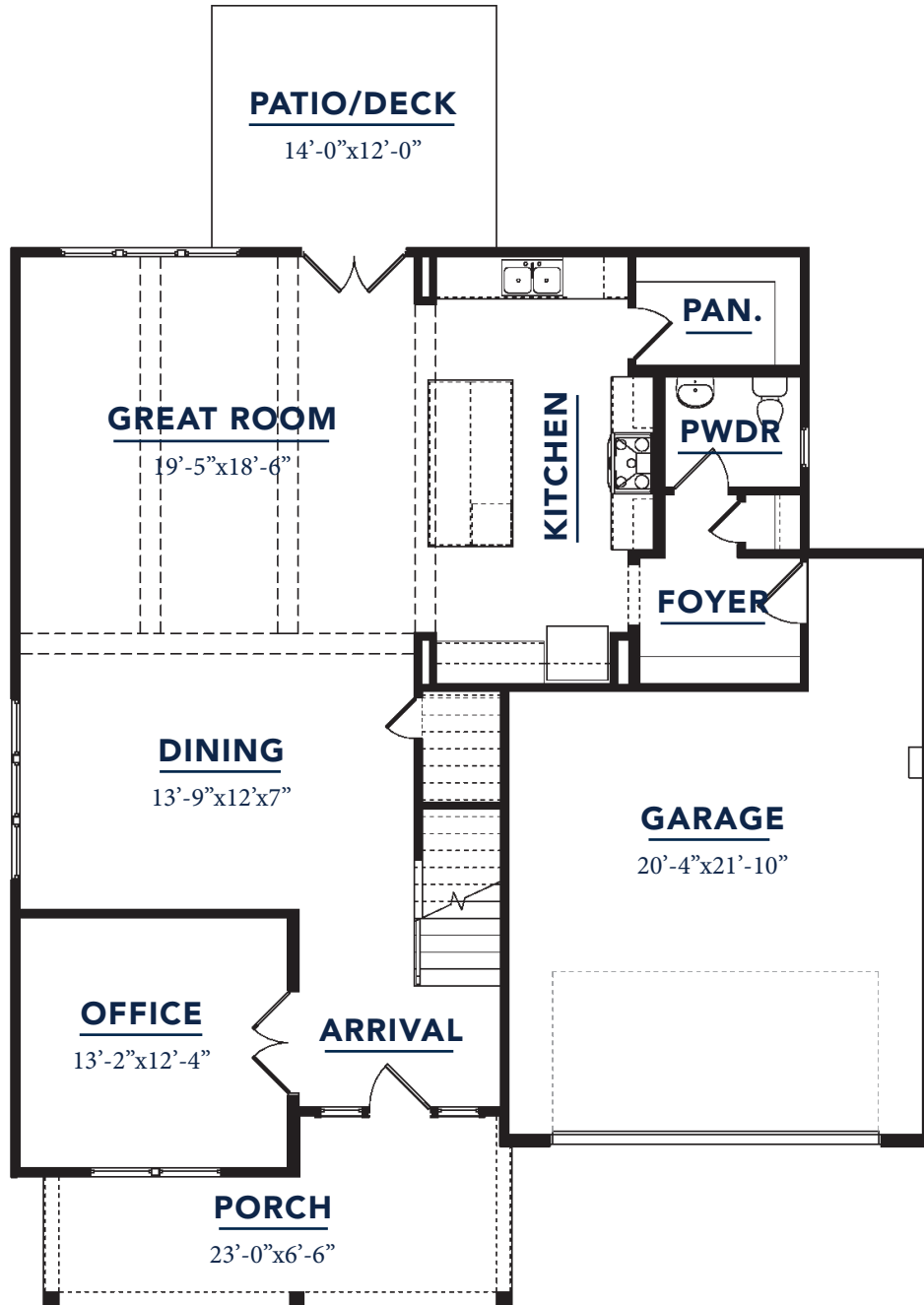
Floorplans and elevations are subject to change. Floorplan reflects typical approximate dimensions. Square footage is approximate. See info packet for house upgrades. Elevation images are for illustrative purposes only. Vista Homes reserves the right to make changes without notice.


VISTA HOMES
Thoughtful Design | Inspired Living

THE PINE II

3,072
TOTAL HEATED SQ FT

3,756
TOTAL SQ FT



MAIN LEVEL

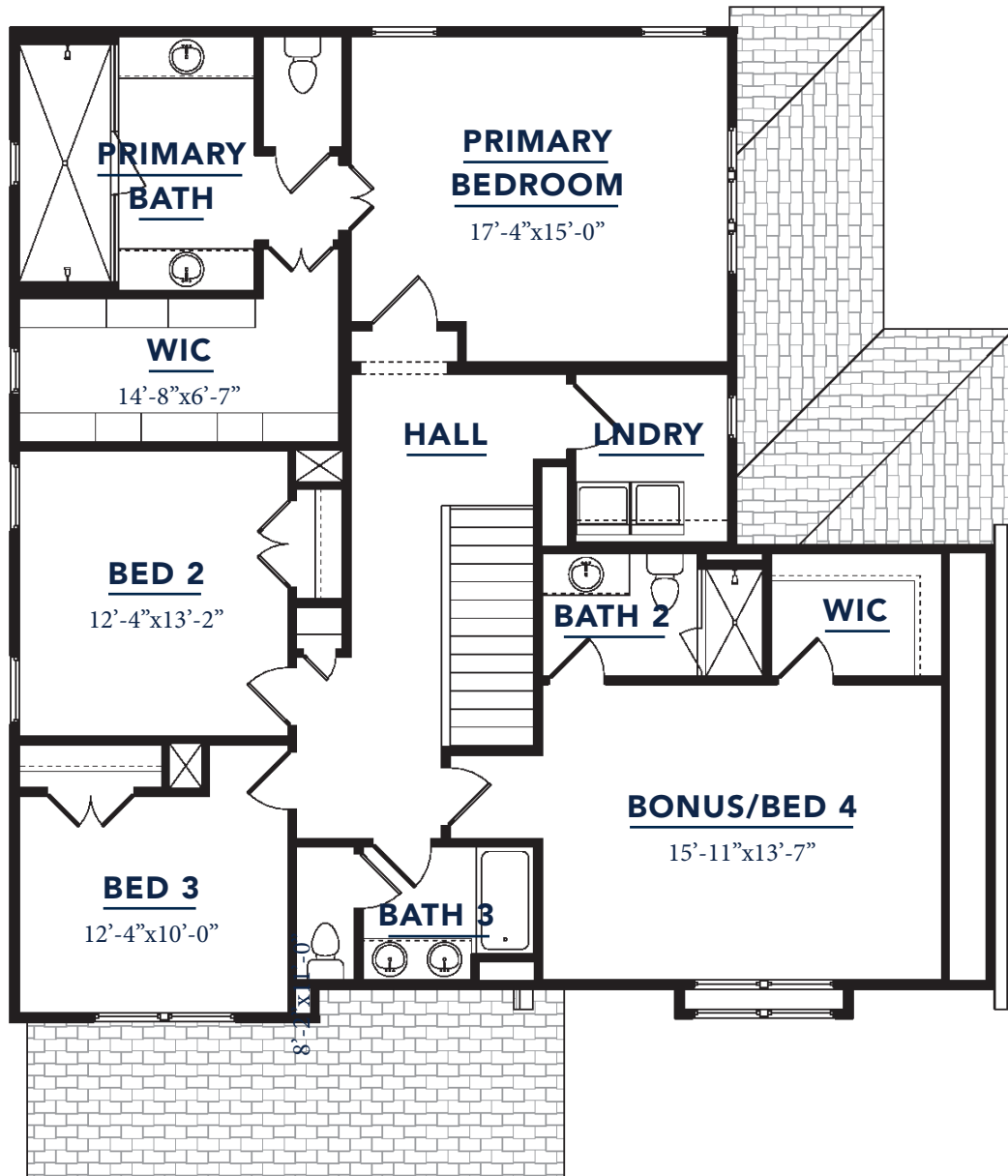
1,393 Heated Sq Ft

Floorplans and elevations are subject to change. Floorplan reflects typical approximate dimensions. Square footage is approximate. See info packet for house upgrades. Elevation images are for illustrative purposes only. Vista Homes reserves the right to make changes without notice.

THE PINE II

3,072
TOTAL HEATED SQ FT

3,756
TOTAL SQ FT



SECOND LEVEL

1,679 Heated Sq Ft

Floorplans and elevations are subject to change. Floorplan reflects typical approximate dimensions. Square footage is approximate. See info packet for house upgrades. Elevation images are for illustrative purposes only. Vista Homes reserves the right to make changes without notice.