



2,876

SQUARE FEET

5

BEDROOMS

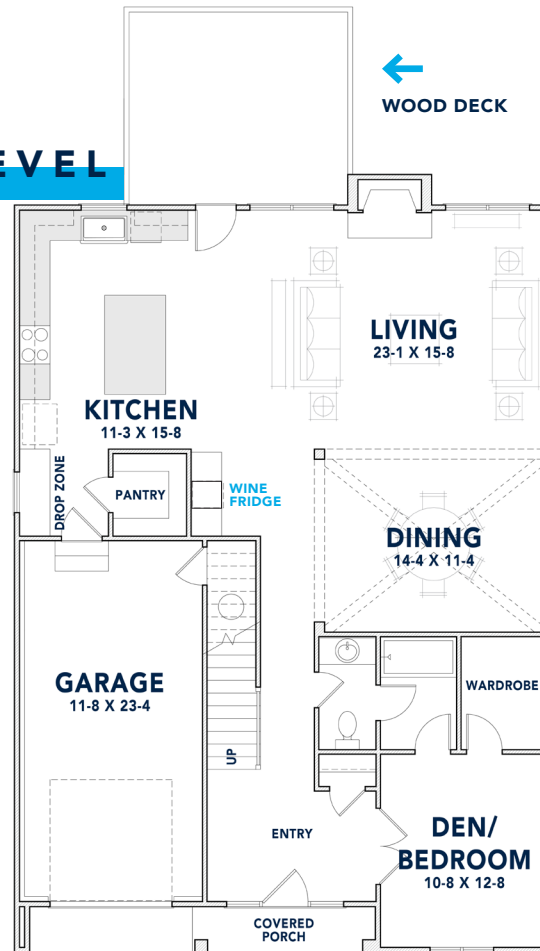
3

BATHROOMS

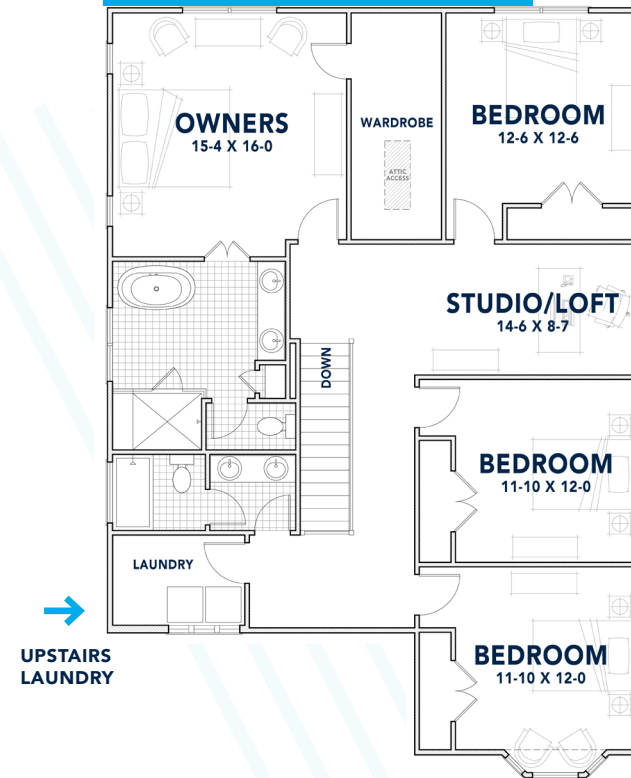
\$684,900

SALES PRICE

MAIN LEVEL



SECOND LEVEL



WHERE YOUR STORY
BEGINS

Tucked away in the Plaza Shamrock neighborhood, less than 10 minutes from Uptown, 2907 Springway Drive features 2,876 square feet with luxury details including quartz countertops, sophisticated bronze finishes, direct vent fireplace, Nest technology package, 15x13 back deck, 1-car garage and spacious backyard with privacy fencing.

Floorplan dimensions are subject to change.

LUXURY IN THE DETAILS

FINISHING TOUCHES

- Crown moulding through first floor and second floor hallway
- 10-foot ceilings on first floor; 9-foot on second floor



IMMACULATE SPACES

- Mohawk 5-inch plank hardwood floors and carpet in bedrooms
- Drop zone at rear entry
- Designer light fixtures throughout



DREAM KITCHEN

- Frosted Carrina quartz countertops
- New Yorker Bright White 3x12 backsplash
- Shaker-style solid wood cabinets
- GE stainless steel gas range with hood
- Whirlpool stainless steel dishwasher with hidden controls

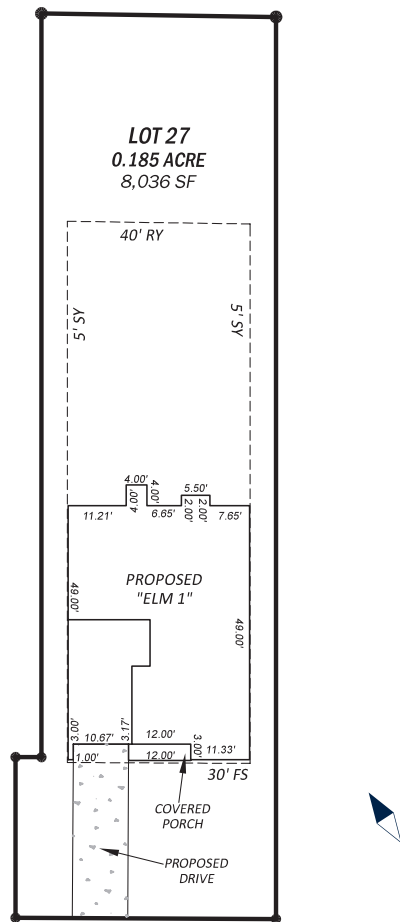
PERSONAL ESCAPE

- Master bathroom with dual showerheads and soaking bathtub
- Spacious backyard with privacy fence
- 42-inch direct vent fireplace

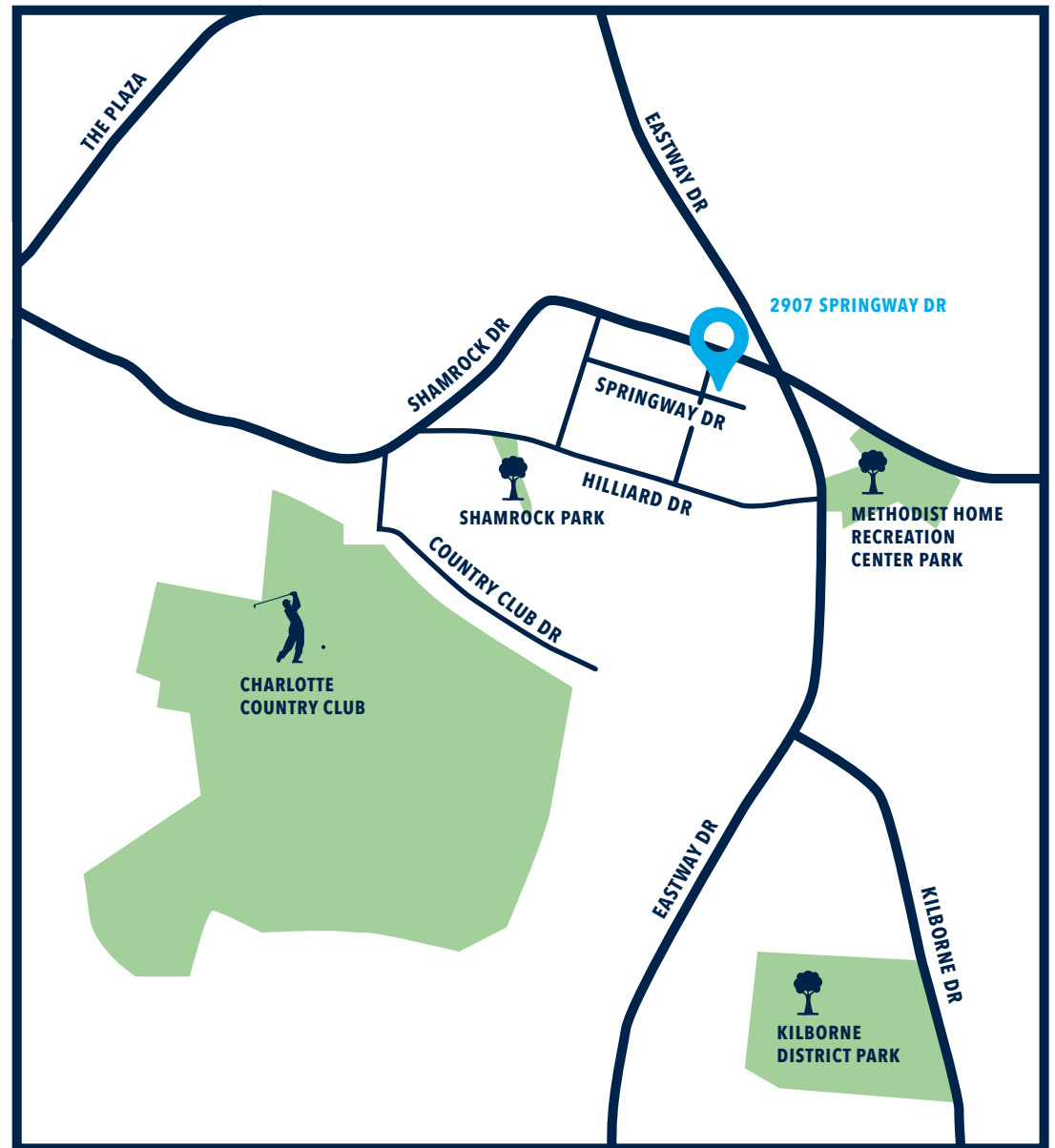


Design selections are subject to change.

AT THE CENTER OF EVERYTHING



Tucked between NoDa and Plaza Midwood, the Plaza Shamrock neighborhood is one of Charlotte's hidden gems. Pick up some pho from Lang Van, a sandwich from Crispy Banh Mi or comfort food from Letty's. Play tennis at Shamrock Park, disc golf at Kilborne District Park or golf at Charlotte Country Club. Uptown Charlotte is just a 10-minute drive from 2907 Springway Drive.



Plot plan is subject to change.