



**2,330**

SQUARE FEET

**4**

BEDROOMS

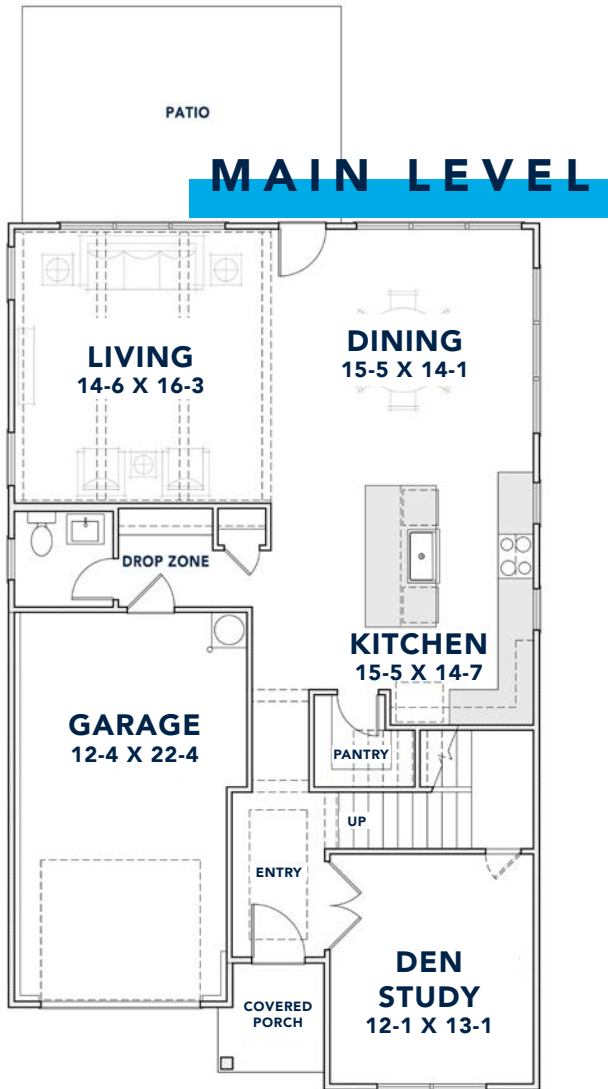
**2.5**

BATHROOMS

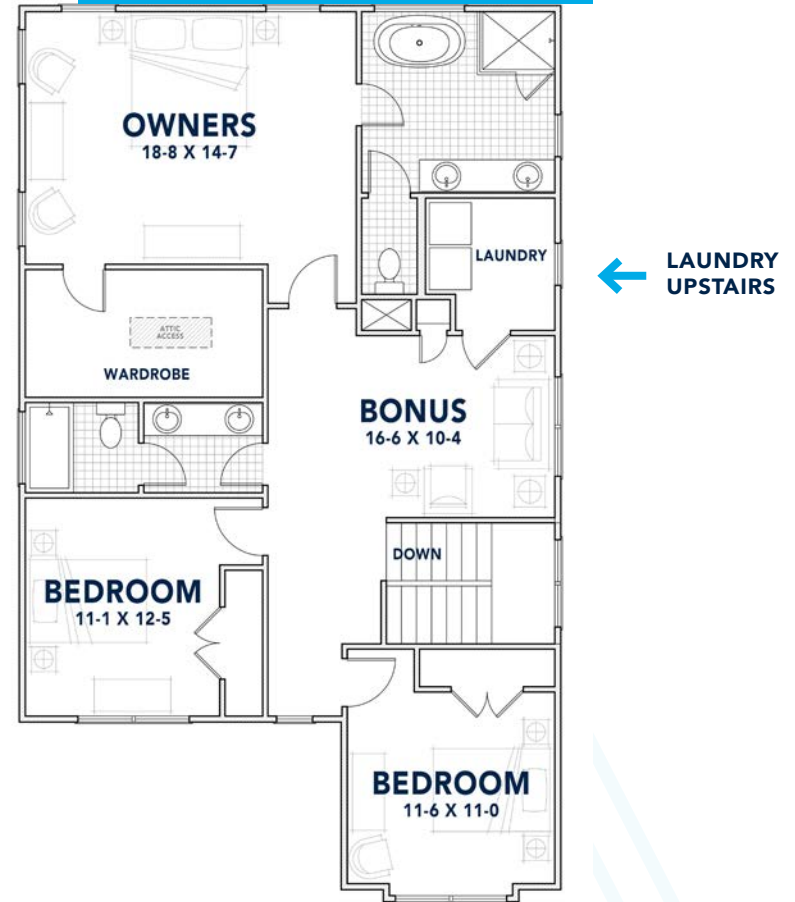
**SOLD**

SALES PRICE

EXPANSIVE PATIO →



**SECOND LEVEL**



WALK-IN CLOSET →

← LAUNDRY UPSTAIRS

WHERE YOUR STORY  
**BEGINS**

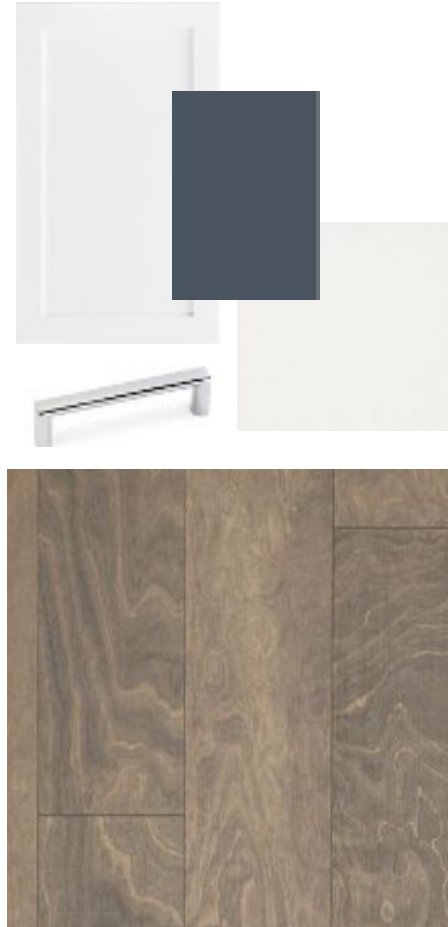
Located in the cozy Oakhurst neighborhood, just 10 minutes from Uptown, 5224 Lynnville Ave. features 2,330 square feet with luxury details including quartz countertops, chrome finishes, a 12x18 back patio, one-car garage and spacious backyard with privacy fencing.

*Floorplan dimensions are subject to change.*

# LUXURY IN THE DETAILS

## FINISHING TOUCHES

- Crown moulding through first floor and second floor hallway
- 10-foot ceilings on first floor; 9-foot on second floor



## DREAM KITCHEN

- Pure White quartz countertops
- New Yorker 3x12 Glossy Smoke backsplash
- Bella shaker-style solid wood cabinets
- GE stainless steel gas range with hood
- Whirlpool stainless steel dishwasher with hidden controls



## IMMACULATE SPACES

- Mohawk 6.5-inch plank hardwood floors and carpet in bedrooms
- Drop zone at rear entry
- Designer light fixtures throughout



## PERSONAL ESCAPE

- Soaking tub in owner and guest baths
- 42-inch direct vent fireplace
- Your own home office with a door
- Spacious backyard with privacy fence

*Design selections are subject to change.*

# AT THE CENTER OF EVERYTHING

Just a 10-minute drive from Uptown, the Oakhurst neighborhood off Monroe Road features seven distinctive homes along the quiet residential street of Lynnville Avenue. Walk to pick up a sandwich from Common Market Oakwold, grab fajitas from Las Margaritas, or take a class at NoDa Yoga, all less than a mile away.



E INDEPENDENCE BLVD

UNAKA AVE

LAS MARGARITAS



DUDLEY DR

BUENA VISTA AVE

GWYNEE AVE

LANIER RD



LYNNVILLE AVE

N SHARON AMITY RD

MONROE RD

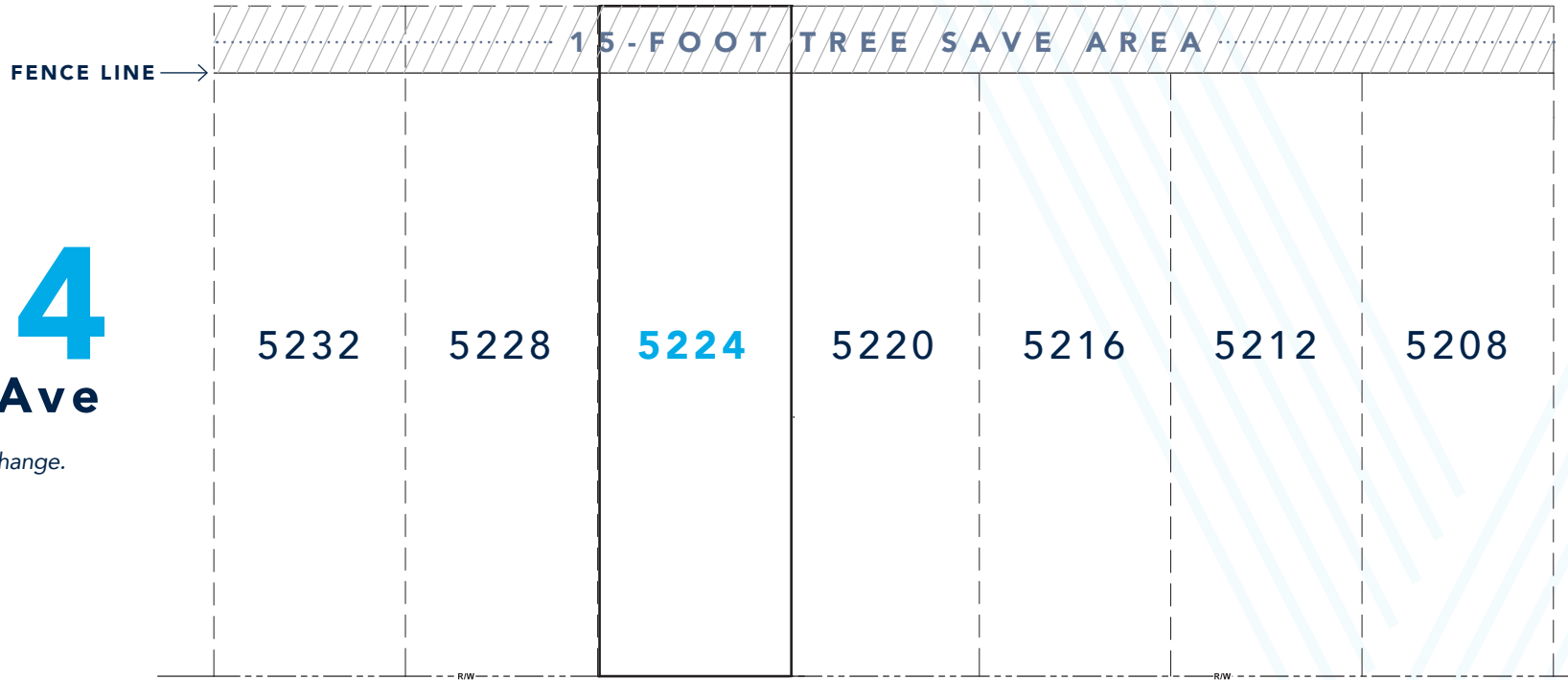
DORIS AVE

ELDER AVE

# 5224

## Lynnville Ave

Plot plan is subject to change.



UNIT	HEATED SF	FLOORPLAN	DESIGN PACKAGE	BED	BATH	GARAGE	OUTDOOR SPACE	PRICE
5232 Lynnville Ave	2,339	Fir 2	Chrome	4	2.5	1-Car	12x18 Back Patio	\$ 571,750
5228 Lynnville Ave	2,356	Fir 3	Black	4	2.5	1-Car	12x18 Back Patio	SOLD
5224 Lynnville Ave	2,330	Fir 1	Chrome	4	2.5	1-Car	12x18 Back Patio	SOLD
5220 Lynnville Ave	2,339	Fir 2	Gold	4	2.5	1-Car	12x18 Back Patio	\$ 573,950
5216 Lynnville Ave	2,356	Fir 3	Chrome	4	2.5	1-Car	12x18 Back Patio	\$ 574,750
5212 Lynnville Ave	2,330	Fir 1	Black	4	2.5	1-Car	12x18 Back Patio	\$ 583,750
5208 Lynnville Ave	2,339	Fir 2	Gold	4	2.5	1-Car	12x18 Back Patio	\$ 588,450