



2,794

SQUARE FEET

5

BEDROOMS

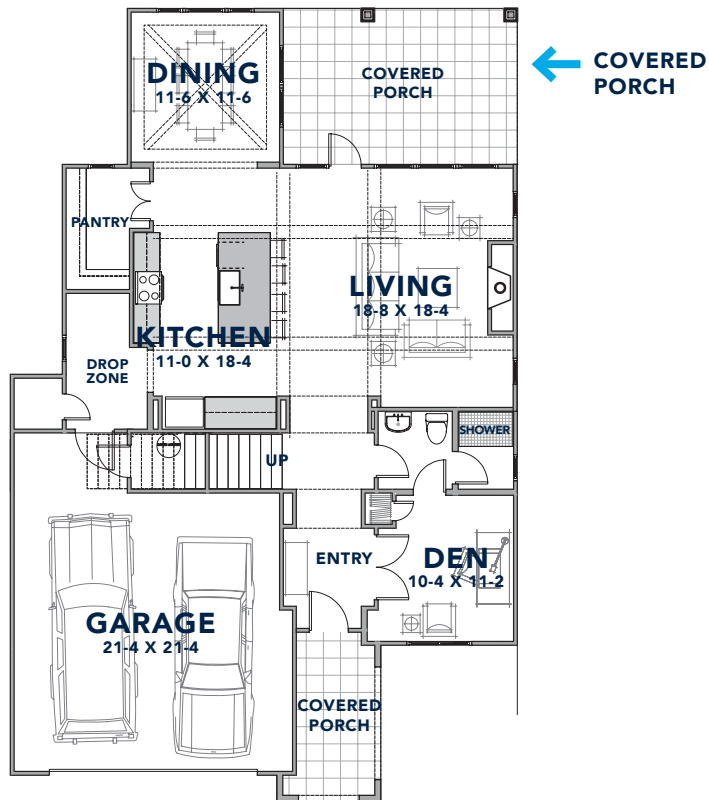
3

BATHROOMS

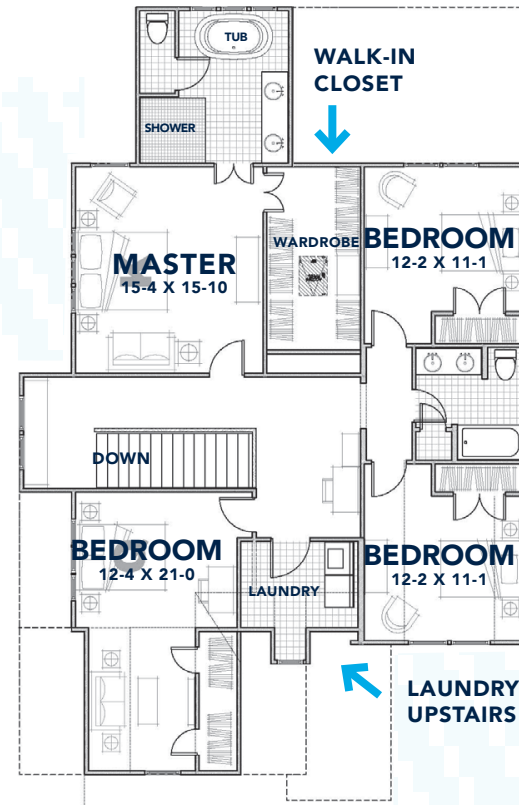
SOLD

SALES PRICE

MAIN LEVEL



SECOND LEVEL



WHERE YOUR STORY
BEGINS

Located in the desirable Madison Park neighborhood, just 15 minutes from Uptown, 5626 Murrayhill Road features 2,794 square feet with luxury details including quartz countertops, sophisticated black finishes, direct vent fireplace, Nest technology package, covered back porch, two-car garage and spacious backyard with privacy fencing.

Floorplan dimensions are subject to change.

LUXURY IN THE DETAILS

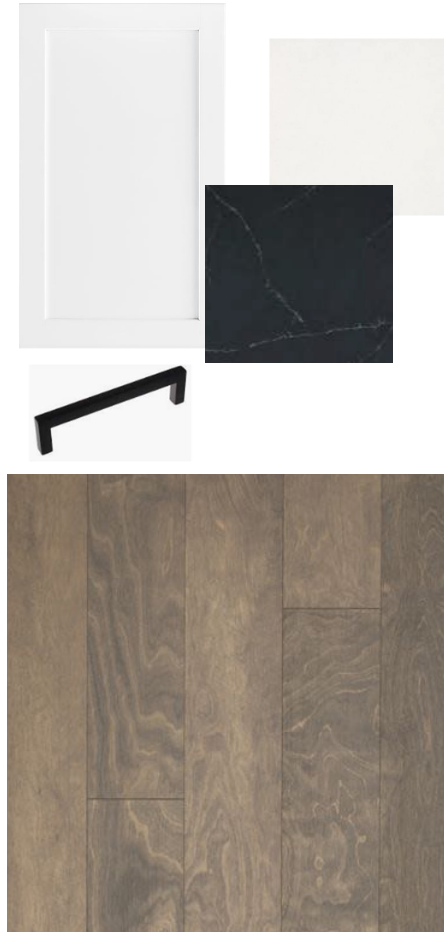
FINISHING TOUCHES

- Crown moulding through first floor and second floor hallway
- 10-foot ceilings on first floor; 9-foot on second floor



IMMACULATE SPACES

- Mohawk 6.5-inch plank hardwood floors in living areas and master bedroom and carpet in bedrooms
- Drop zone at rear entry
- Designer light fixtures throughout



DREAM KITCHEN

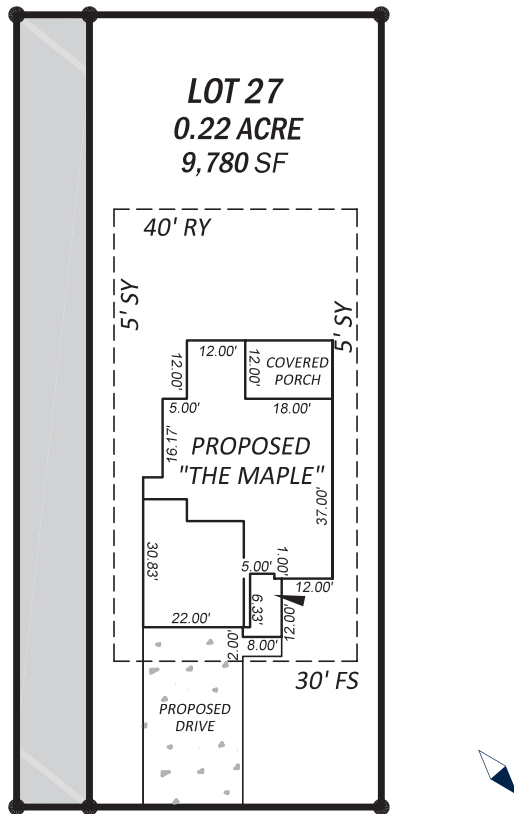
- Pure White quartz countertops
- Arabescato 4x12 backsplash
- Bella shaker-style solid wood cabinets
- GE stainless steel gas range with hood
- Whirlpool stainless steel dishwasher with hidden controls

PERSONAL ESCAPE

- Soaking tub in owner and guest baths
- 42-inch direct vent fireplace
- Your own home office with a door
- Covered back porch
- Spacious backyard with privacy fence

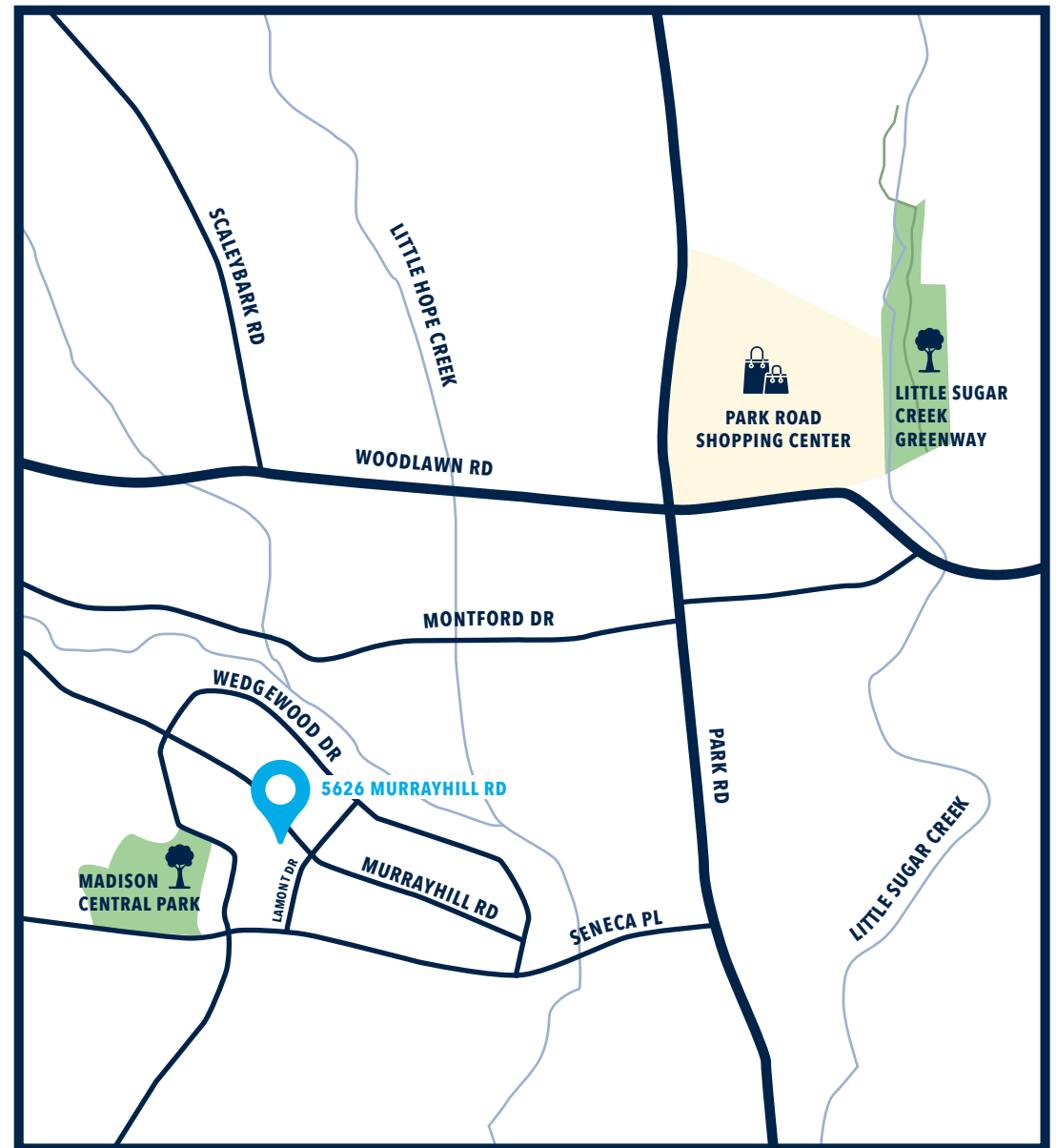


Design selections are subject to change.



Nestled among the trees of the established Madison Park neighborhood, 5626 Murrayhill Road offers a peaceful setting within walking distance to Park Road Shopping Center and Montford Drive. Pick up rotisserie chicken from Viva Chicken, a burger from Shake Shack or ice cream from Jeni's. Find your Zen at Corepower Yoga, peruse the shelves at Park Road Books or explore the flowers at the gardens of Blackhawk Hardware. Take the kids to play at Madison Central Park or hop on the Little Sugar Creek Greenway, which will extend 19 miles when complete.

AT THE CENTER OF EVERYTHING



Plot plan is subject to change.