



2,794

SQUARE FEET

5

BEDROOMS

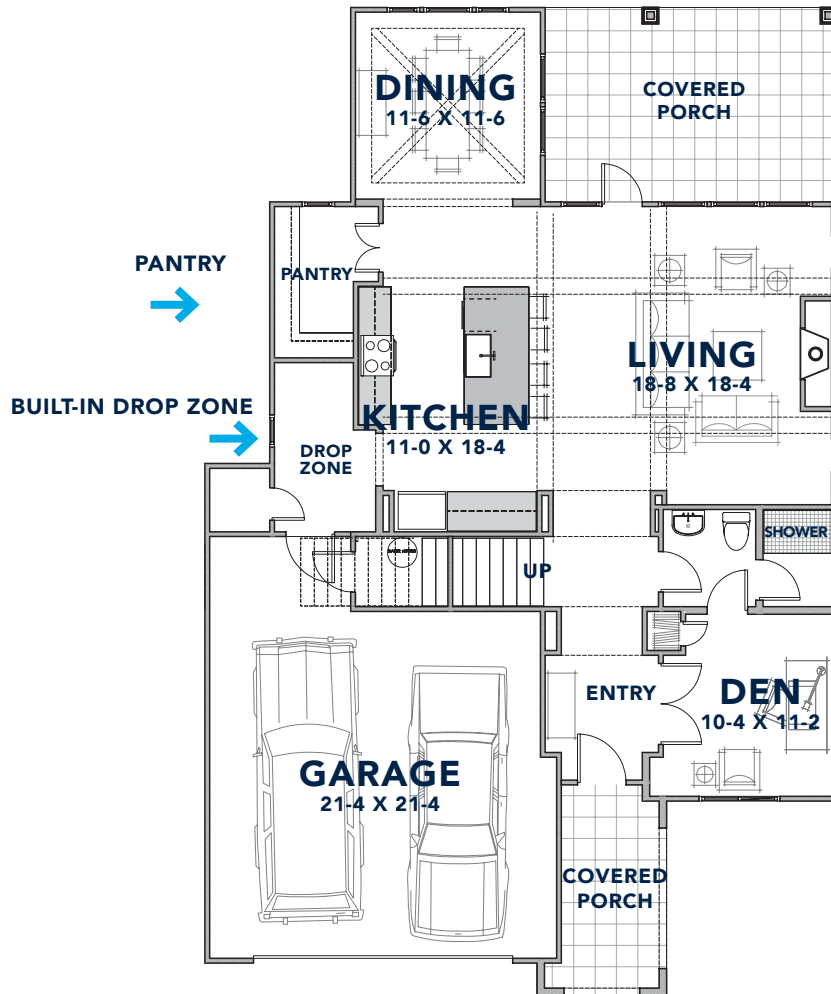
3

BATHROOMS

\$749K

SALES PRICE

MAIN LEVEL



EXPANSIVE PORCH

SECOND LEVEL



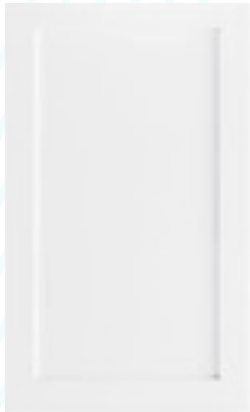
WHERE YOUR STORY
BEGINS

Located in the Country Club Heights neighborhood, adjacent to Plaza Midwood, 2604 Palm Avenue features 2,794 square feet with luxury details including quartz countertops, sophisticated black fixtures, direct vent fireplace, Nest technology package, 12x18 covered porch, drop zone with built-ins, two-car garage with double driveway and spacious backyard with privacy fencing.

Floorplan dimensions are subject to change.

LUXURY IN THE DETAILS

DREAM
KITCHEN



Shaker-style solid wood cabinets



Faucet



Sink

GE stainless steel gas range with hood



Microwave Drawer



Whirlpool stainless steel dishwasher with hidden controls



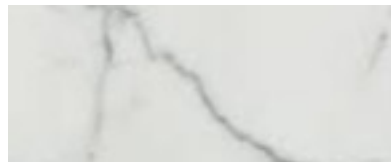
30" Gas Range & Hood



Island Pendants



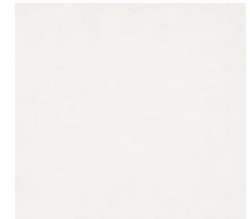
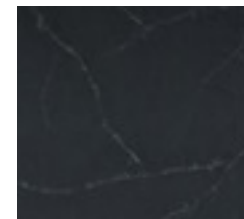
Cabinet Hardware



Elegance Arabescato backsplash

Island

Perimeter



Quartz Countertops

Design selections are subject to change.

LUXURY IN THE DETAILS

PERSONAL ESCAPE



Shaker-style solid wood
master cabinets



Cabinet Hardware



Master Bath Tile Flooring



Powder Room Pedestal Sink



Powder Room Vanity Sconce



Guest & Master Vanity Lighting



Master Tub



Master Shower



Guest Bath Tile Flooring

LUXURY IN THE DETAILS

FINISHING TOUCHES



Nest Hello Video
Doorbell



Nest X Yale
Smart Lock



Nest Smart Thermostat



Garage & Front of
House Lantern



Office Pendant Light



Mohawk 6.5" Oak Flooring
(First Floor and Second Floor
Common Areas)



Mohawk Carpet
(Second Floor - All Bedrooms/Closets)



Front Porch
Hanging Light

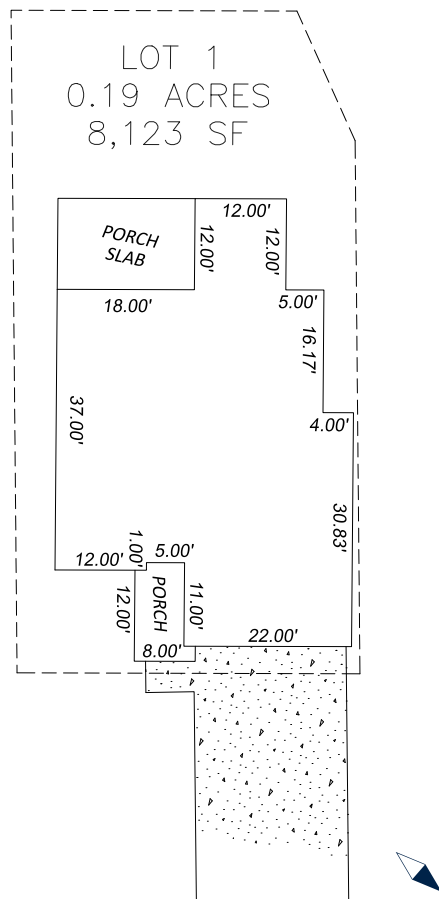


Door Hardware

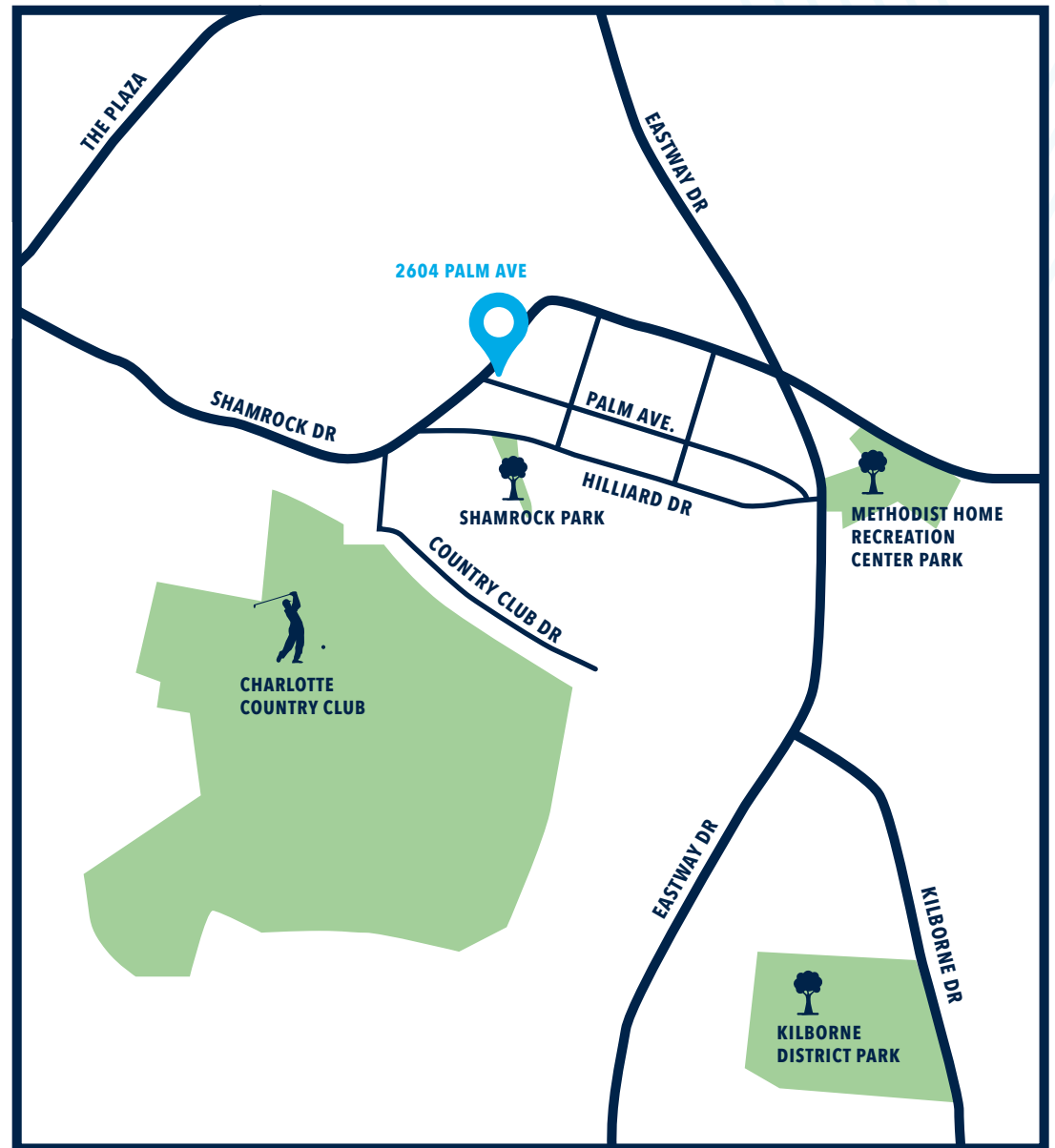


Dining Chandelier

AT THE CENTER OF EVERYTHING



Live in the desirable Country Club Heights neighborhood, conveniently located next to Plaza Midwood. Pick up some pho from Lang Van, a sandwich from Crispy Banh Mi or comfort food from Letty's. Play tennis at Shamrock Park, disc golf at Kilborne District Park or golf at Charlotte Country Club. Uptown Charlotte is just a 10-minute drive from 2604 Palm Avenue.



Plot plan is subject to change.