



**2,931** SQUARE FEET

**5** BEDROOMS

**3** BATHROOMS



## MAIN LEVEL



## SECOND LEVEL



WHERE YOUR STORY  
**BEGINS**

Located in the Country Club Heights neighborhood, adjacent to Plaza Midwood, 2600 Palm Avenue features 2,931 square feet with luxury details including quartz countertops, sophisticated champagne bronze fixtures, direct vent fireplace, Nest technology package, 15x12 wood deck, one-car garage and spacious backyard with privacy fencing.

*Floorplan dimensions are subject to change.*

# LUXURY IN THE DETAILS

DREAM  
KITCHEN



*Island*



*Perimeter*

Shaker-style solid wood cabinets



Faucet

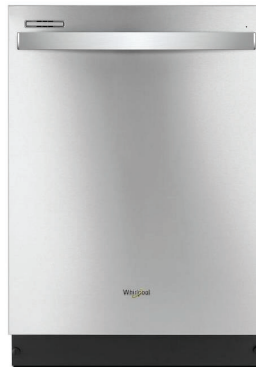


Sink

GE stainless steel gas range with hood



*Microwave Drawer*



*Whirlpool stainless steel dishwasher with hidden controls*



*30" Gas Range & Hood*



Island Pendants



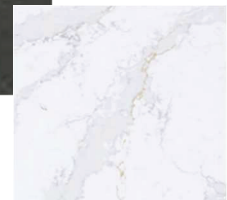
Cabinet Hardware



Backsplash



*Perimeter*



*Island*

Quartz Countertops

Design selections are subject to change.

# LUXURY IN THE DETAILS

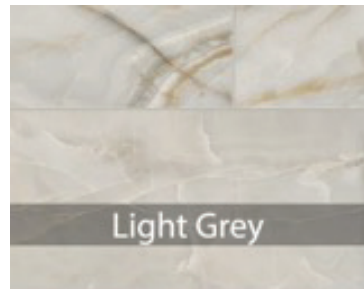
PERSONAL  
ESCAPE



Shaker-style solid wood  
master cabinets



Cabinet Hardware



Master Bath Flooring



Powder Room Undermount Sink



Powder Room Vanity Sconce



Guest & Master Vanity Lighting



Master Tub



Master Shower



Secondary Bath Flooring

# LUXURY IN THE DETAILS

## FINISHING TOUCHES



Nest Hello Video  
Doorbell



Nest X Yale  
Smart Lock



Nest Smart Thermostat



Garage & Front of  
House Lantern



Den/Study Pendant Light



Mohawk 5" Oak Flooring  
(First Floor and Second Floor  
Common Areas)



Mohawk Carpet  
(Second Floor - All Bedrooms/Closets)



Garage & Front of  
House Lantern

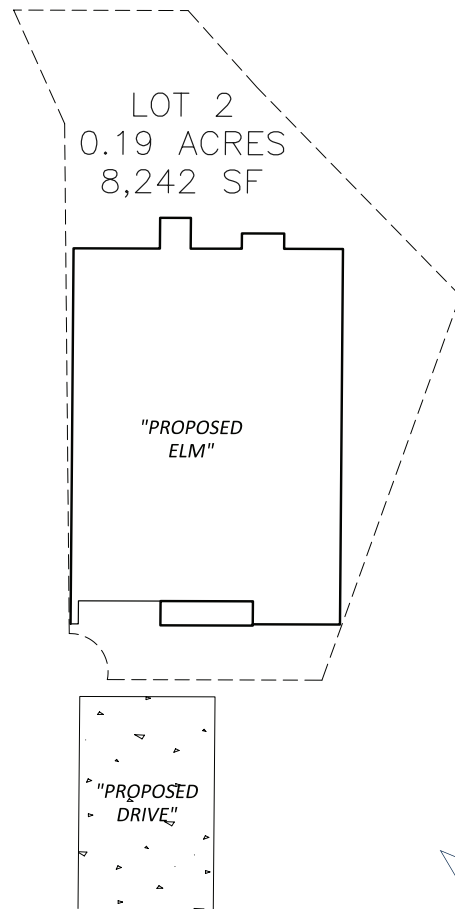


Door Hardware

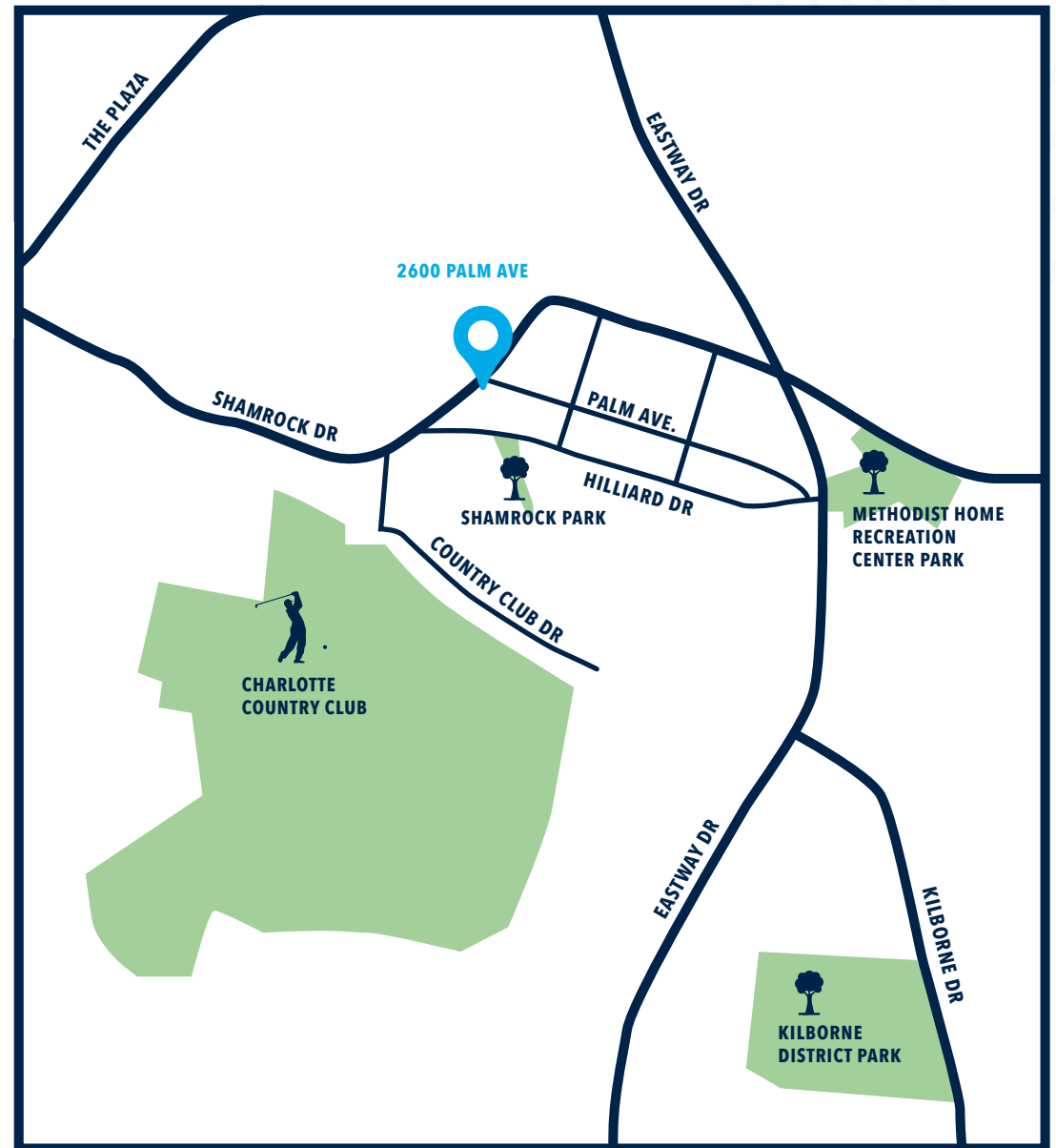


Dining Chandelier

# AT THE CENTER OF EVERYTHING



Live in the desirable Country Club Heights neighborhood, conveniently located next to Plaza Midwood. Pick up some pho from Lang Van, a sandwich from Crispy Banh Mi or comfort food from Letty's. Play tennis at Shamrock Park, disc golf at Kilborne District Park or golf at Charlotte Country Club. Uptown Charlotte is just a 10-minute drive from 2600 Palm Avenue.



*Plot plan is subject to change.*