



2,356

SQUARE FEET

4

BEDROOMS

2.5

BATHROOMS

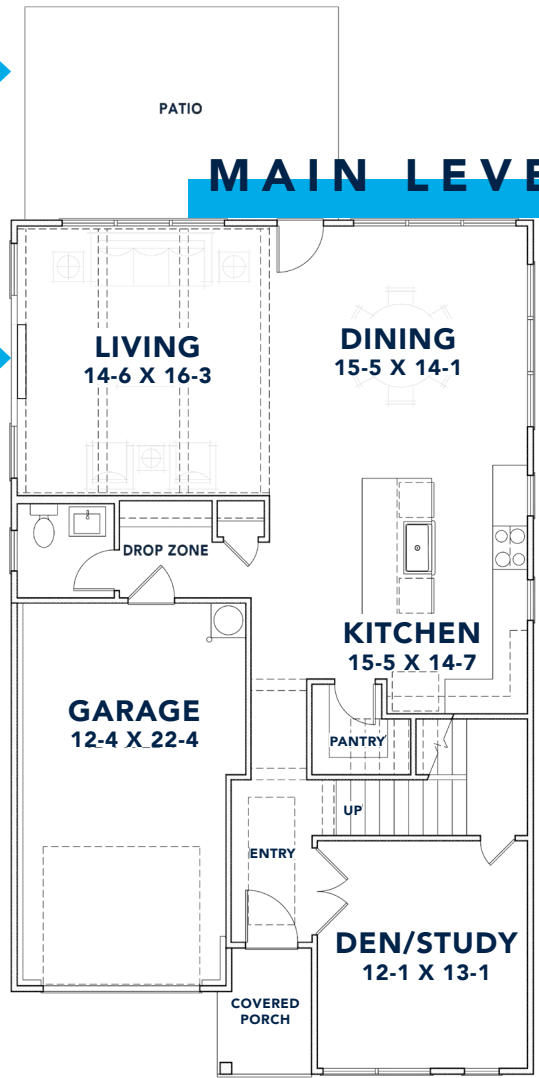
SOLD

SALES PRICE

EXPANSIVE PATIO →

MAIN LEVEL

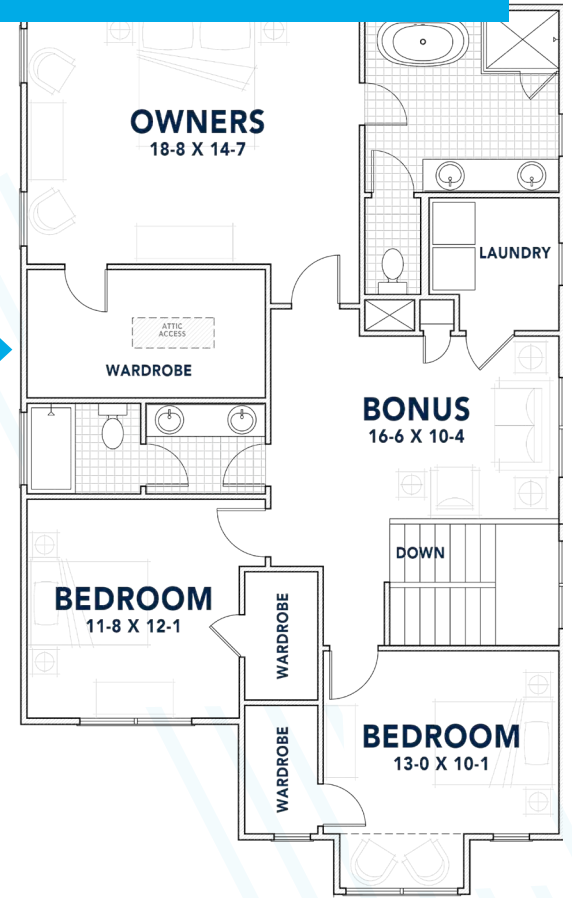
FIREPLACE →



SECOND LEVEL

WALK-IN CLOSET →

← LAUNDRY UPSTAIRS



WHERE YOUR STORY
BEGINS

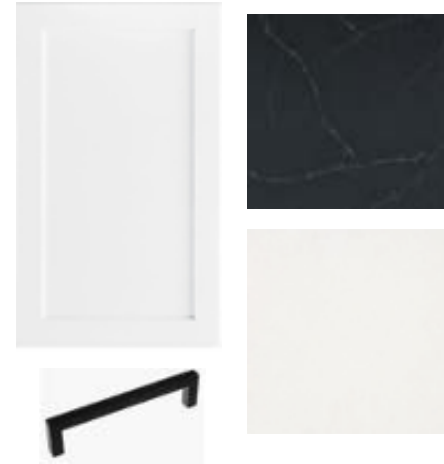
Located in the cozy Oakhurst neighborhood, just 10 minutes from Uptown, 5228 Lynnville Ave. features 2,356 square feet with luxury details including quartz countertops, black finishes, a one-car garage, a 12x18 back patio and spacious backyard with privacy fencing.

Floorplan dimensions are subject to change.

LUXURY IN THE DETAILS

FINISHING TOUCHES

- Crown moulding through first floor and second floor hallway
- 10-foot ceilings on first floor; 9-foot on second floor



DREAM KITCHEN

- Pure White quartz countertops on perimeter with Soapstone Charcoal quartz on kitchen island
- Arabescato Elegance 4x12 backsplash
- Bella shaker-style solid wood cabinets
- GE stainless steel gas range with hood
- Whirlpool stainless steel dishwasher with hidden controls

PERSONAL ESCAPE

- Soaking tub in owner and guest baths
- 42-inch direct vent fireplace
- Your own home office with a door
- Spacious backyard with privacy fence



IMMACULATE SPACES

- Mohawk 6.5-inch plank hardwood floors and carpet in bedrooms
- Drop zone at rear entry
- Designer light fixtures throughout



Design selections are subject to change.

AT THE CENTER OF EVERYTHING

Just a 10-minute drive from Uptown, the Oakhurst neighborhood off Monroe Road features seven distinctive homes along the quiet residential street of Lynnville Avenue. Walk to pick up a sandwich from Common Market Oakwold, grab fajitas from Las Margaritas, or take a class at NoDa Yoga, all less than a mile away.



E INDEPENDENCE BLVD

UNAKA AVE

LAS MARGARITAS



DUDLEY DR

BUENA VISTA AVE

GWYNEE AVE

LANIER RD



LYNNVILLE AVE

N SHARON AMITY RD

MONROE RD

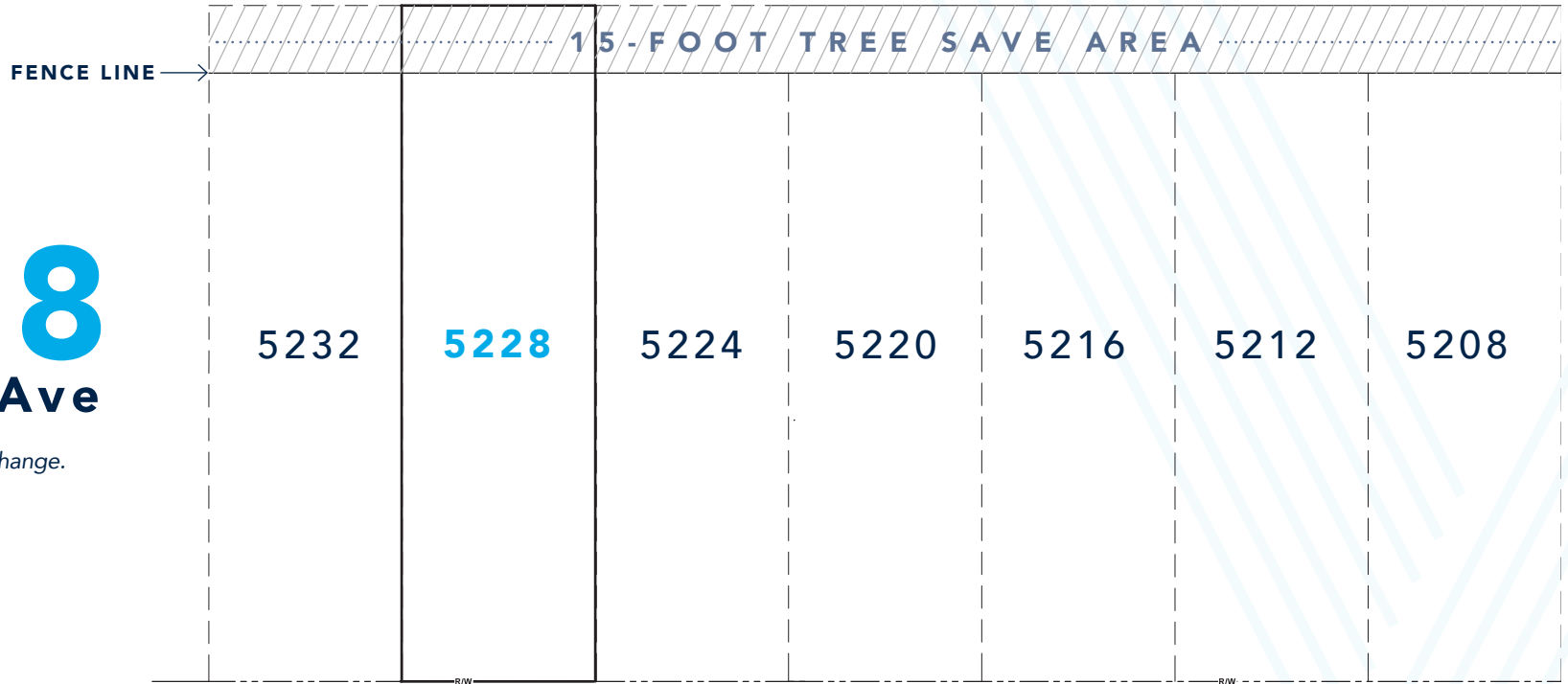
DORIS AVE

ELDER AVE

5228

Lynnville Ave

Plot plan is subject to change.



UNIT	HEATED SF	FLOORPLAN	DESIGN PACKAGE	BED	BATH	GARAGE	OUTDOOR SPACE	PRICE
5232 Lynnville Ave	2,339	Fir 2	Chrome	4	2.5	1-Car	12x18 Back Patio	SOLD
5228 Lynnville Ave	2,356	Fir 3	Black	4	2.5	1-Car	12x18 Back Patio	SOLD
5224 Lynnville Ave	2,330	Fir 1	Chrome	4	2.5	1-Car	12x18 Back Patio	SOLD
5220 Lynnville Ave	2,339	Fir 2	Gold	4	2.5	1-Car	12x18 Back Patio	SOLD
5216 Lynnville Ave	2,356	Fir 3	Chrome	4	2.5	1-Car	12x18 Back Patio	SOLD
5212 Lynnville Ave	2,330	Fir 1	Black	4	2.5	1-Car	12x18 Back Patio	\$ 614,650
5208 Lynnville Ave	2,339	Fir 2	Gold	4	2.5	1-Car	12x18 Back Patio	SOLD