



**3,765** SQUARE FEET

**4** BEDROOMS

**4** BATHROOMS



- INTERIOR RENDERINGS -

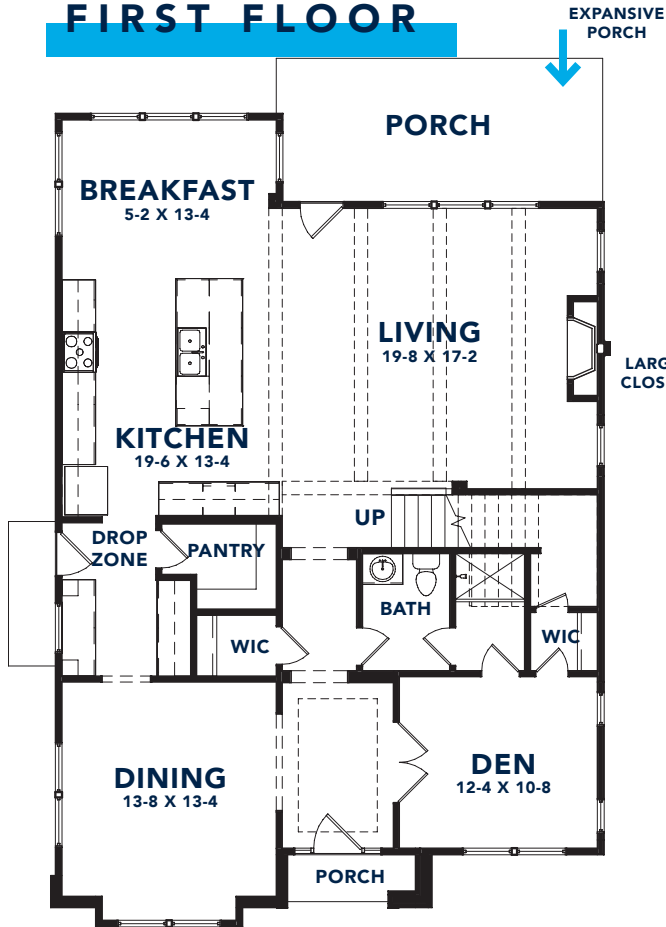


KITCHEN



LIVING ROOM

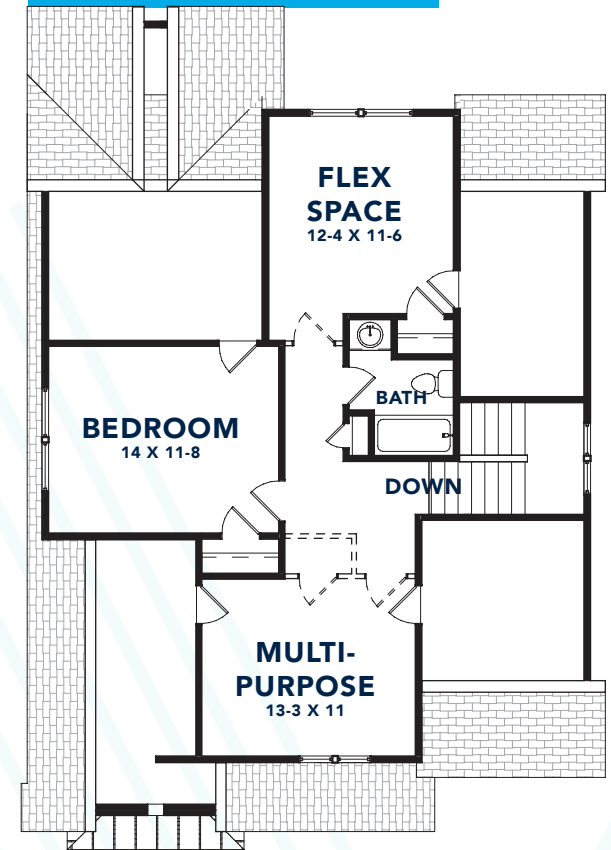
## FIRST FLOOR



## SECOND FLOOR



## THIRD FLOOR



WHERE YOUR STORY  
**BEGINS**

Located in the Sedgefield neighborhood, 528 Poindexter Drive features 3,765 square feet with four bedrooms, four full bathrooms, a den and breakfast area, plus two large bonus rooms. Luxury details include quartz countertops, sophisticated champagne bronze fixtures, direct vent fireplace, Nest Smart Thermostat, expansive porch and spacious backyard with privacy fencing.

*Floorplan dimensions are subject to change.*



# LUXURY IN THE DETAILS

DREAM  
KITCHEN



Shaker-Style Solid Wood Cabinets



Faucet



Sink



Microwave Drawer



Z Line 24" Dishwasher



36" Gas Range & Hood



Breakfast Room Lighting



Island Pendants



Cabinet Hardware



Stainless Steel  
Wine Cooler



Backsplash



Quartz Countertops

Design selections are subject to change.

# LUXURY IN THE DETAILS

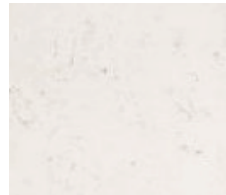
PERSONAL  
ESCAPE



Master Bath Cabinets



Cabinet Hardware



Master Bath Flooring



Guest Bathroom Under-mount Sink  
and Faucet



Powder Room Vanity Lighting



Master Vanity Lighting



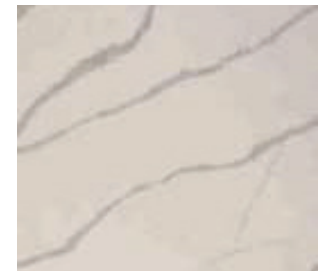
Guest Bath Vanity Lighting



Master Tub and Filler



Master Shower



Guest Bath Quartz Countertops

Design selections are subject to change.

# LUXURY IN THE DETAILS

## FINISHING TOUCHES



Nest Hello Video  
Doorbell



Nest X Yale  
Smart Lock



Nest Smart Thermostat



Front Porch Light



Den/Study Pendant Light



Mohawk 5" Oak Flooring  
(First Floor and Second Floor,  
Rec Room and Stairs)



Mohawk Carpet  
(Second Floor - All Bedrooms/Closets)



Side Entry & Back  
Porch Light



Dining Chandelier



Live in the established Sedgefield neighborhood, conveniently located near South End and Dilworth between South Boulevard and Park Road. Walk along Sedgefield's tree-lined streets to nearby restaurants including The Waterman, Ru San's and Comet Grill. Play a game of tennis or walk along the creek at Sedgefield Park. Hop on the Rail Trail or relax at the lake at Freedom Park. Uptown Charlotte is just a 7-minute drive from 528 Poindexter Drive.

## AT THE CENTER OF **EVERYTHING**

