

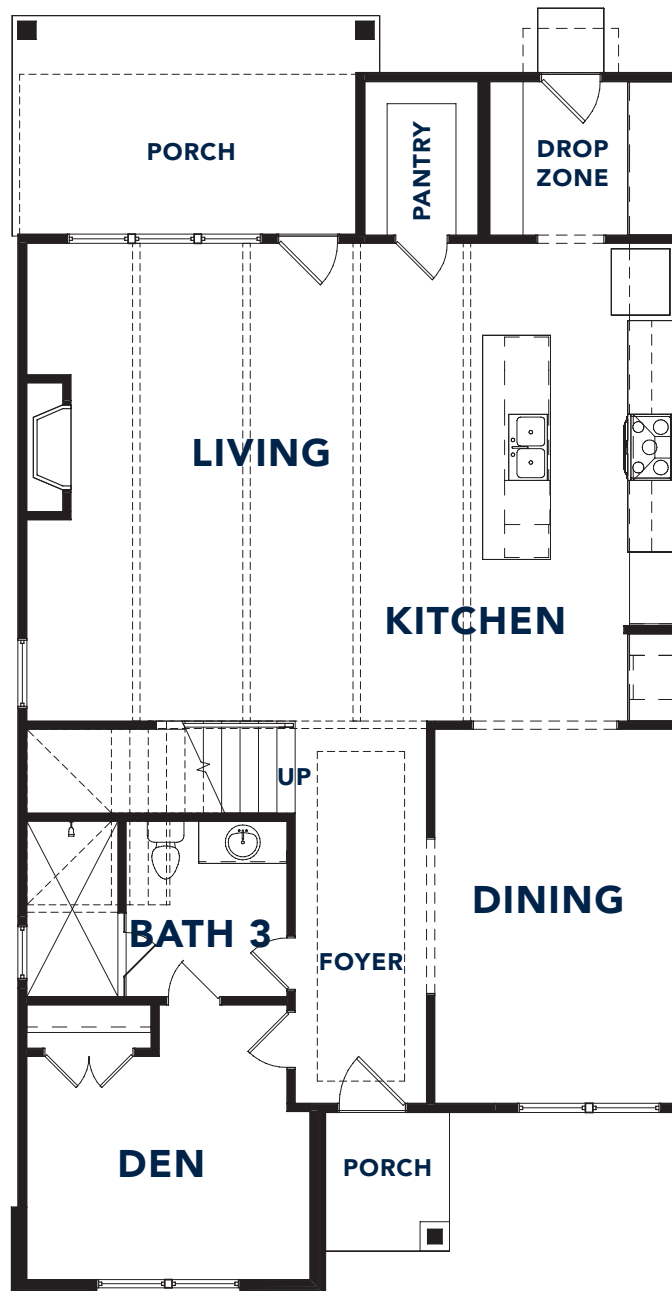
THE OAKWOOD II

2924.00

TOTAL HSF

3121.00

TOTAL AREA



MAIN LEVEL

1406 Heated Living SF

Floorplans and elevations are subject to change. Floorplan reflects typical approximate dimensions. Square footage is approximate. See info packet for house upgrades. Elevation images are for illustrative purposes only. Vista Homes reserves the right to make changes without notice.

THE OAKWOOD II

2924.00

TOTAL HSF

3121.00

TOTAL AREA



SECOND LEVEL

1518 Heated Living SF

Floorplans and elevations are subject to change. Floorplan reflects typical approximate dimensions. Square footage is approximate. See info packet for house upgrades. Elevation images are for illustrative purposes only. Vista Homes reserves the right to make changes without notice.